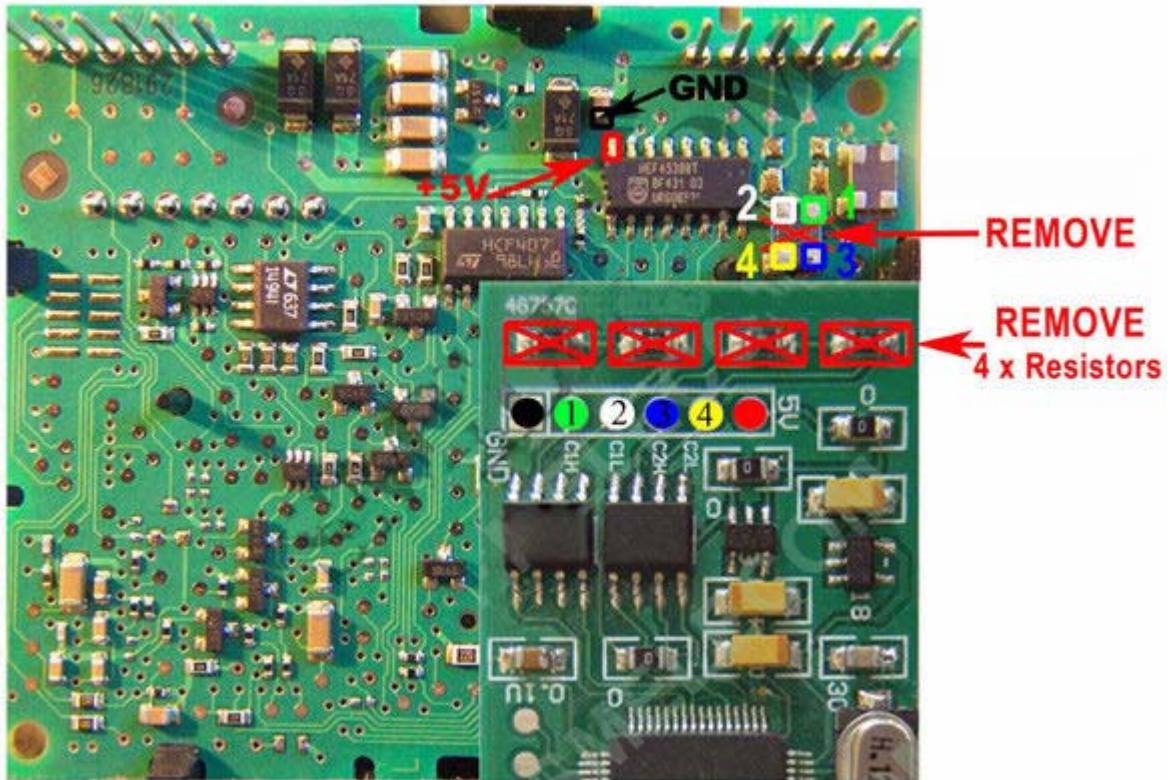


MERCEDES BENZ ML/GL CLASS (W164)

CAN FILTER CONNECTIONS

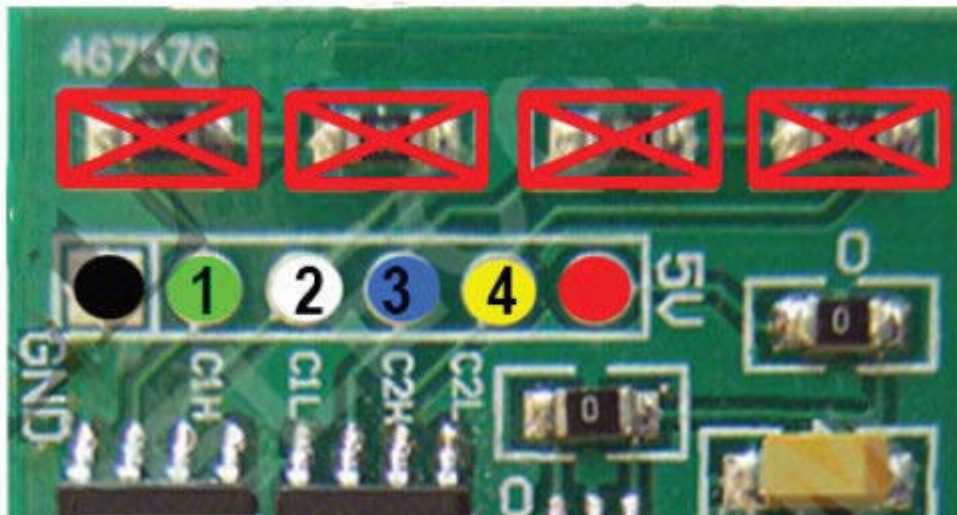
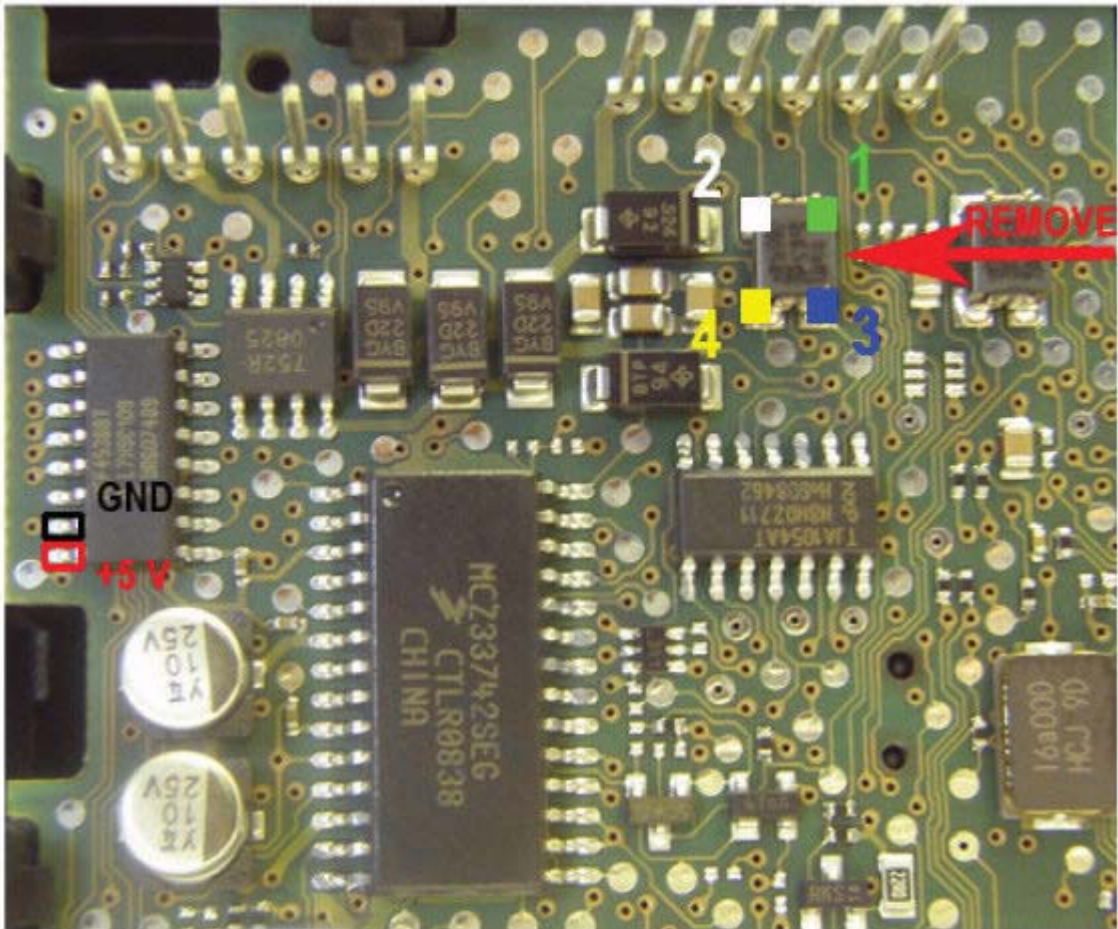
Version 1



MERCEDES BENZ ML/GL CLASS (W164)

CAN FILTER CONNECTIONS

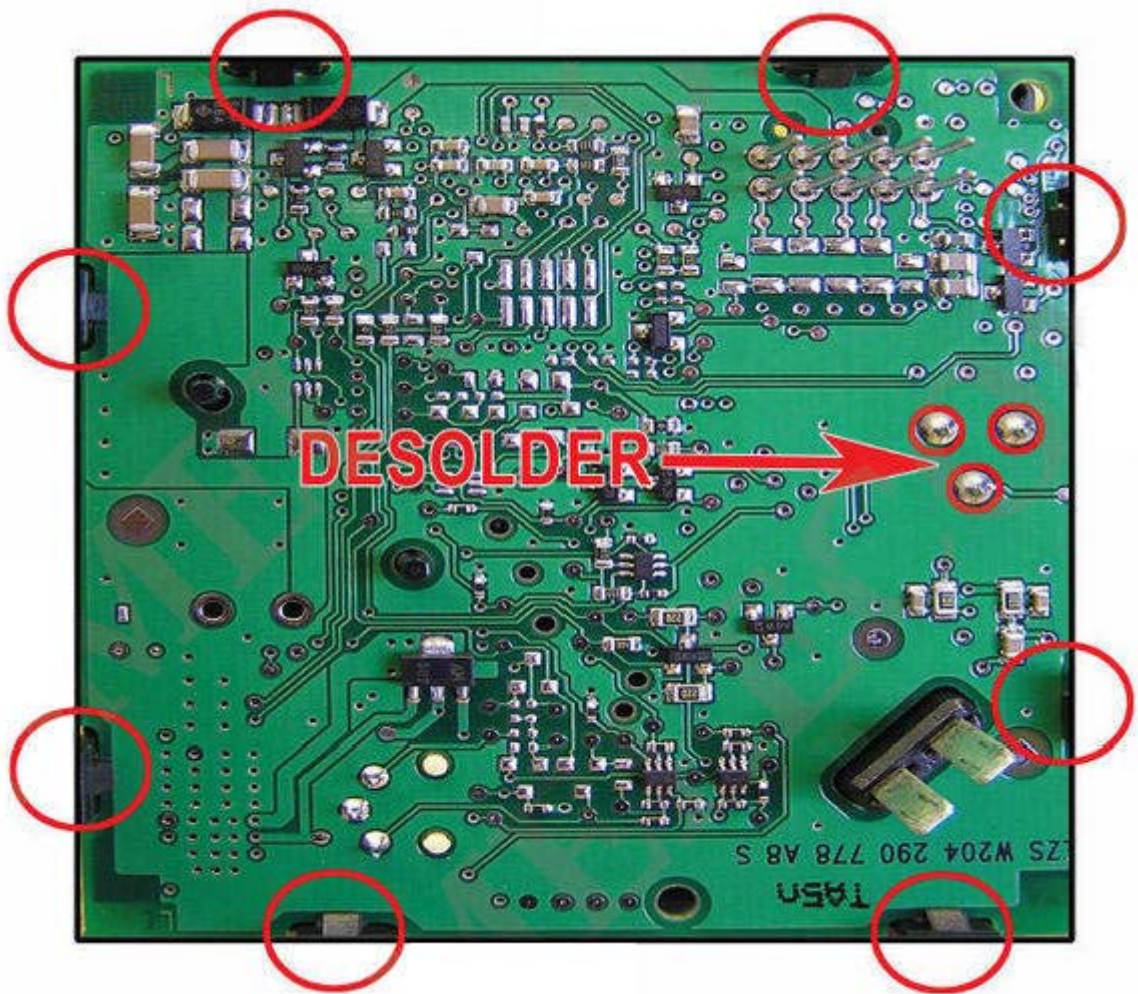
Version 2



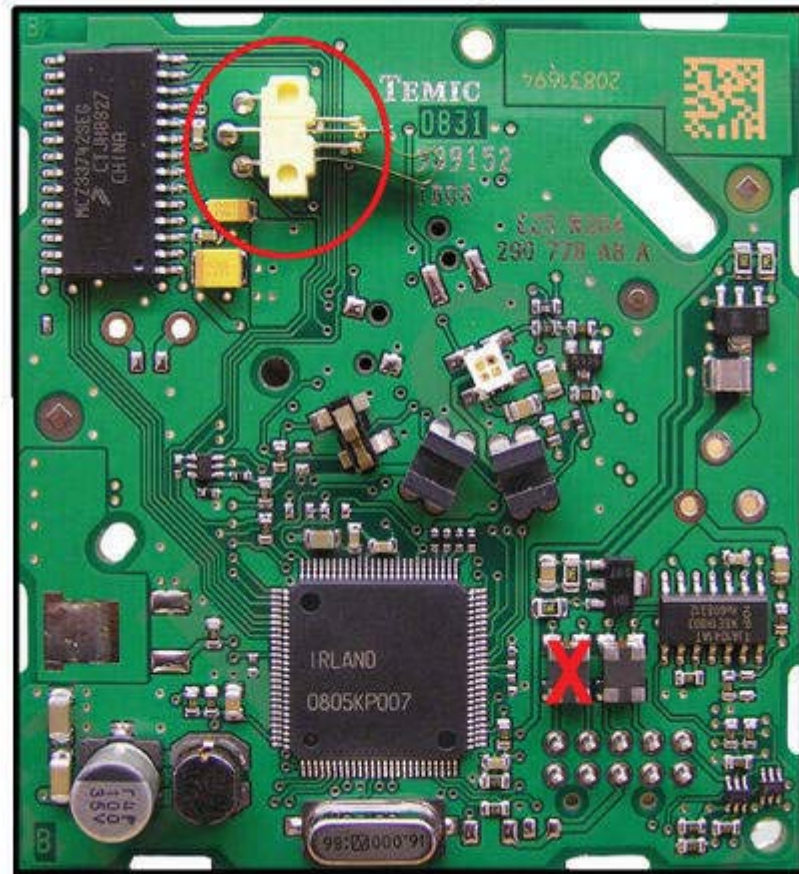
MERCEDES BENZ C CLASS (W204)

CAN FILTER CONNECTIONS

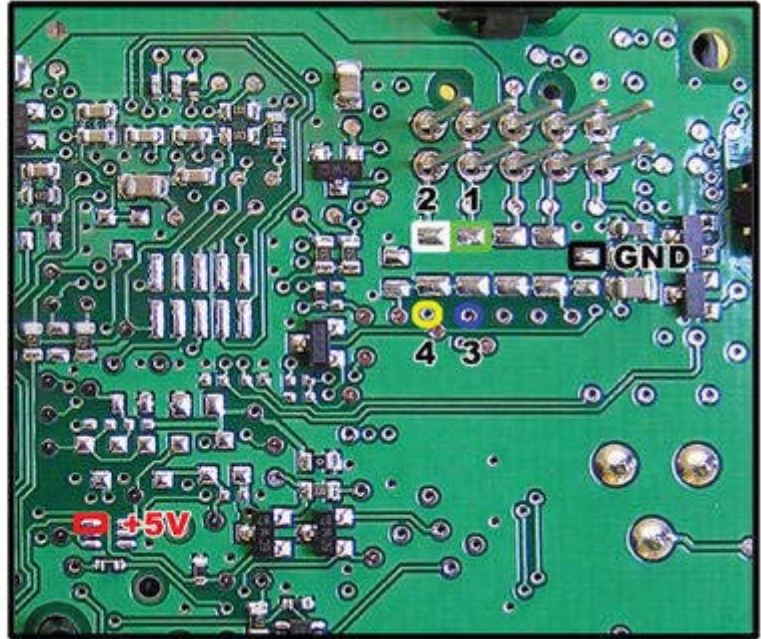
Desolder the 3 points on the EZS's PCB as shown below, and then gently unclip the retaining clips indicated with **red circles**, and separate the upper and lower board Carefully remove from EZS casing.



Please remove the regulator marked **X** and discard. Once removed reassemble the PCB taking care of the switch marked in the **Red Circle**, making sure it is not damaged.



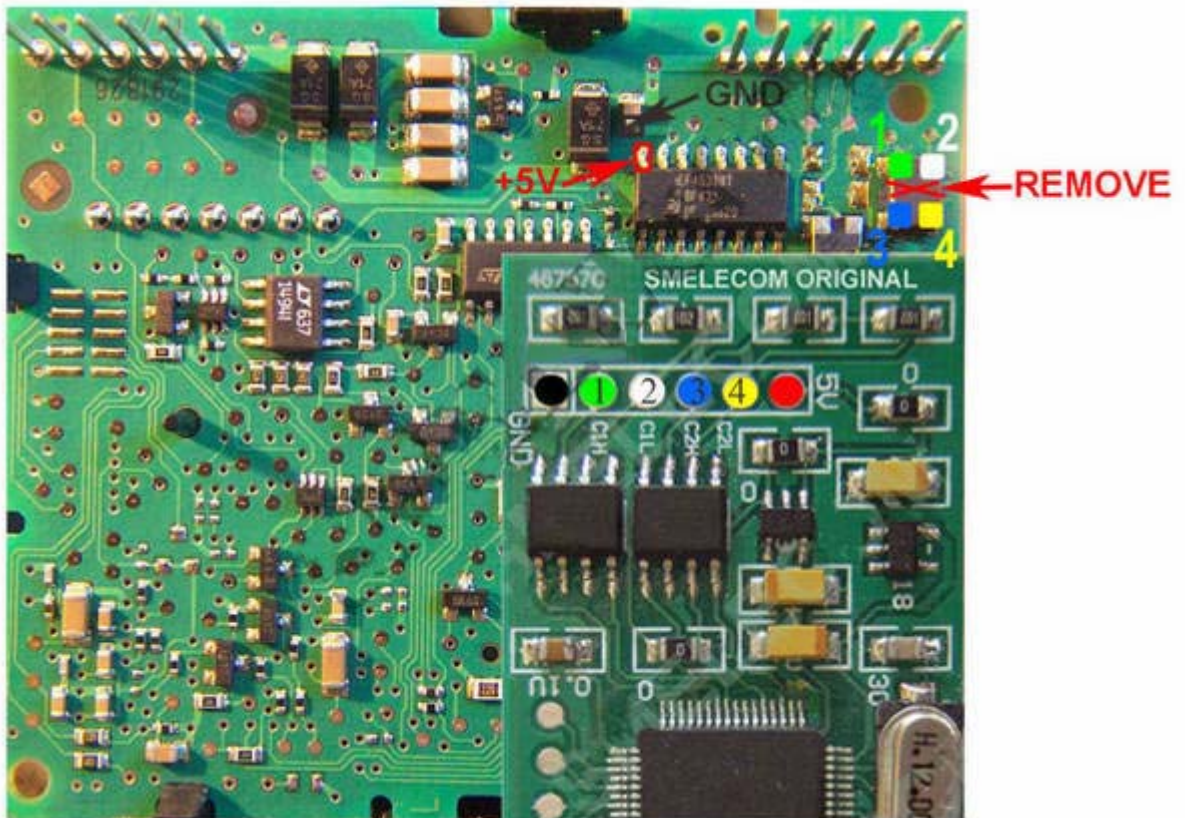
Connect wires from Can Filter to EZS as shown below. Please make sure that the top two left resistors shown **X** below are not present on the Can Filter, if so please remove and discard. Once all wires are connected try in car before completing. It is advisable to insulate the Can Filter with heat shrink insulation tape. Finally fix the Can Filter to the EZS's PCB with doubled sided tape



MERCEDES BENZ S CLASS (W221)

CAN FILTER CONNECTIONS

Version 1



MERCEDES BENZ S CLASS (W221)

CAN FILTER CONNECTIONS

Version 2

